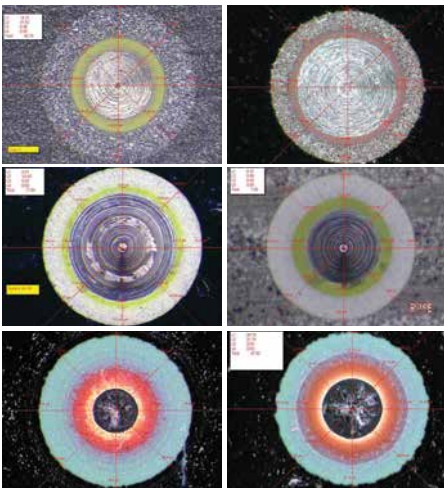


# FILM THICKNESS MEASURING SYSTEM

**ASTM  
D5796**

The film thickness system has been developed with both the Production line and Quality Control Laboratory in mind. Advanced computer programmed motion control results in repeatability with an excellent degree of accuracy.



## FEATURES AND BENEFITS

- ✓ Eliminates operator error
- ✓ Repeatable/Consistent results from machine to machine, site to site, and operator to operator.
- ✓ Environmentally safe, no solvent, containments, to dispose of
- ✓ System requires no calibration for different substrate materials
- ✓ System can be expanded to meet other requirements such as defect inspection
- ✓ Low Maintenance
- ✓ Quick and Accurate
- ✓ Optical/video equipment can be used for other purposes, (i.e. substrate surface defects, paint film defects, etc)
- ✓ System can be used to measure thick films (up to 12 Mil (300 microns) using optional bit
- ✓ Can Read primer & Top coat film at one time
- ✓ Active Calibration System automatically adjusts for changes in the magnification of the MonoZoom
- ✓ DJH View Software with Multi point Averaging, gives consistent results (Refer to DJH View Software overview)

## DJH VIEW OVERVIEW

---

### DJH View, delivering the power and flexibility you need for today's demanding imaging applications.

This powerful 32 bit application runs under the Windows 7 operating system, capturing your images in outstanding Hi-Resolution colour. DJH View is the efficient way to replace today's document process. Whether your current methods are, film or thermal paper based, these outdated processes are expensive, difficult, and time consuming to manage. DJH View is the perfect answer to replace these aging methods, providing you with an efficient all in one solution to your imaging and archival needs.

DJH View is a powerfully integrated all-in-one package, with a full array of imaging, archival, and reporting tools. Imagine being able to capture images, annotate, measure, print, store, and retrieve previously saved images without ever having to leave the program. No switching between applications, no cutting and pasting, no worries about where did I save that image? DJH View supports Windows MDI (Multiple Document Interface) protocol, this means that you can actually open, and or capture several different images into several document windows, and have them all open at the same time. This give you the flexibility to compare images, or capture a series of images and come back to work on them when it is convenient. Other non MDI compliant programs will only allow you to work on one image at a time. This means if you want to capture a series of images you must capture one image save it then go back and capture the next image. With DJH View if you want 6 images in a series, you would simply open 6 document windows on the program desktop, click on the capture icon, click on OK to capture the required image, then one mouse click on the next document you want to use, click on capture, select OK when you have the sample view you desire, and on to the next one. In this manor a series can be quickly captured, and then your attention can be focused to working on the saved images. When you have completed your tasks you can print off the images and or store them in the ODBC (Open Data Base Concept) compliant database for future retrieval. ODBC compliance ensures that your data is accessible from a wide variety of sources.

## IMAGE CAPTURE AND LIVE ENHANCEMENT TOOLS

---

### Capturing images is just a mouse click away.

From the main program desktop click on the camera icon, this will bring you to the preview window. Your images are displayed in a large preview window in 24 bit true colour. This preview window is also a real time display with full 30 fps (Frames Per Second) refresh rate (for comparison, Television shows are typically filmed at 20 fps, and Motion Pictures for the theatre are usually filmed at 15fps). 30fps refresh means full motion, no jerky action, that makes the task of locating, and focusing on the sample or sample region effortless.

The DJH View program incorporates several key real time controls that enables you to actively adjust the Contrast, Brightness, Colour Hue, and Saturation levels with the easy to use slide controls. And since you are working in real time, you can instantly see the effect these changes make to viewing your samples. Once you have adjusted the image details to suite, you would simply click on OK, and your image is instantly digitized and transferred to the current working document. We have also added a "Save as Default" button that you can use to save a setup for repetitive use. You can always return to the original factory default settings by clicking on the default button next to each enhancement tool.

Another key feature of the DJH View system is the ability to use overlays. Our capture hardware supports the use live overlays, in a future release we will include an update that will allow you to perform functions, such as being able to do a measurement on the live image, or create a template to check samples for conformity without having to capture the image each time.

## UNBEATABLE MEASUREMENT TOOLS

DJH View provides an unmatched collection of measurement tools, highly accurate, very powerful, and unequalled.

DJH View also incorporates another very important feature; while many software packages support the use of multiple camera sources; we have taken this one step further. DJH View also includes multiple calibration support, in fact up to nine different calibrations can be stored, enough to handle even your most demanding applications. We have also included support for zoom microscopes with our support for encoder inputs. Calibrations can be mixed for zoom and fixed lens support. Each calibration can be uniquely named for easy reference.

Switching calibrations can be done on the go, without having to shut down the application and restart for the new calibrations to take effect. Let's say you are in the middle of working on one sample, you want to change lenses and take another sample that requires a different magnification, no problem. Open a new document window click on the Zoom menu and open the change lens dialog window, a simple drop down window is displayed with all the available lens setups you have stored, click on the calibration you need and you're done. Click on the capture window, digitize the image, and you are ready to measure. No need to shut down the program and restart, no need to close the previous image. Built in encoder support makes working with Zoom microscopes a snap. With encoder support enabled you only need to calibrate the zoom once, the software will ask you to calibrate several point along the zoom path from the lowest setting to the highest setting, once this is complete the software will read positional data from the encoder and actively calculate the correct calibration for your current setting. Measurements can be made in; inch, mm, micron, or mils. 10x factoring is also supported for the Film build industry when using instruments such as DJH Designs ASTM standard testing method, "Crater" Film Build System.

## OUR STANDARD COLLECTION OF TOOLS

### ✓ Point To Point

This freehand tool allows the user to make quick and precise measurements between any two points on the image. Simply click on the first point to mark the beginning of the segment. Now simply click on the end point. A line is now drawn out from the origin to the termination point and a segment length is displayed.

### ✓ Parallel Line

Accurately measure any parallel related items between to variable length parallel lines. This type of measurement is useful for the measurement of plating's or coating layers. Unlimited number of parallel line tools can mark on the image taking measurements over a wide sample area. Measure multiple layer coatings with ease, each parallel line tool can measure up to 5 layers at a time. The parallel line tool can also be used for measurement of weld penetrations, used in conjunction with the 3 point arc tool you can easily measure weld penetration on cross sections taken from welds on tubular materials.

### ✓ 4 Point Average

The 4 point tool creates a floating cross hatch on the screen over the active document window. The cross hatch is at this point interactive with the mouse cursor. Place the cursor over any point on the subject and click the left

mouse button to drop the cross hatch onto the image. This tool can operate as a simple cross hair measurement tool for aligning and measuring between any two points along the X or Y axis, or as multi point averaging tool. for measurements of coatings or plating layers using both X and Y to define 4 measurement points. You can measure up to 5 layers at a time displaying both the 4 point average and actual individual readings for each marker.

### ✓ 8 Point Average

For consistency, the 8 point tool is a multi-axis measurement tool designed primarily for measurement of coating thickness on cross sections of rounds objects or for use with instrument such as DJH Designs ASTM standard testing method, "Crater" Film Build System. The 8 point tools creates a floating multi axis cross hatch. The cross hatch is interactive with the mouse cursor allowing for easy placement of the cross hatch on the subject. This multi axis tools gives you up to eight points of reference with the ability marking up to five layers at a time on each reference axis. The system can display both the 8 point average and actual individual readings for each marker. An overall coating/plating thickness dimension is also displayed. The 8 point point average tool takes the guess work out of measuring your film samples.

### ✓ Radial

Radial dimensioning, the circle tool is used to determine the radii of circular objects or sections. i.e. to measure the radius of the etched holes in printed circuit boards. This tool is also useful for customers wanting to measure the tip radius of items such as cutting tools to determine edge sharpness. The circle tool is also used as a 3 point arc tool to help in determination of weld sections on tubing where you are unable to see the tubing wall in the weld area, simply select three point along the visible wall the tool will calculate and draw the circle to the correct diameter. You now have a guide to determine the start point for doing weld penetration measurements. You can leave the program generated circle on screen and open the parallel line tool to complete the measurement. The circle tool also functions as a multi-layer tool. This makes measurements of items such as wall thickness a snap. With the ability of measuring up to five layers at a time even measurements of coatings on tube or round objects is made easy.

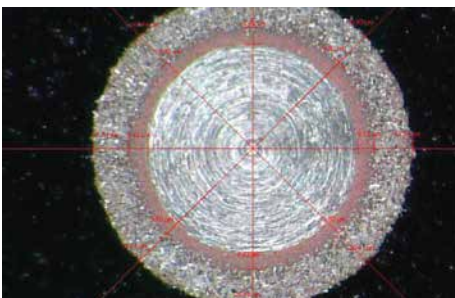
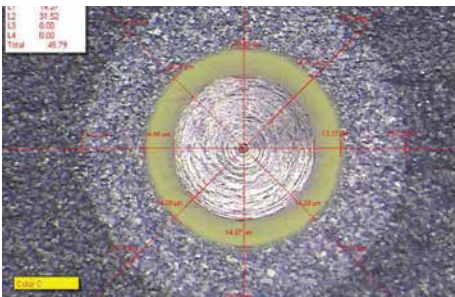
### ✓ Angle

This convenient and powerful tool allows for angular measurements in degrees on any component, object or section where angle measurement are required.

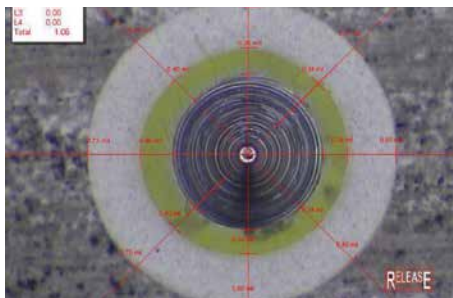
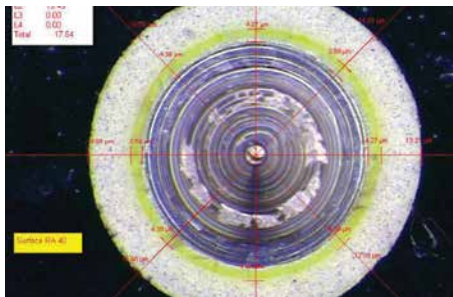
## DJH VIEW UPDATE - WHAT'S NEW

DJH View Version 8 is the next generation of the film thickness measurement system, built around the core product which makes using the system an easy transition for existing customers to adapt to the technology. At the heart of the new system is DJH View Version 8. In the past with all versions including version 7 all measurement is done manually by the operator. The operator captures the image and then makes the determination of the layers by his interpretation of the interface between the coating layers. While not a slow process it does take time to properly position the 8 points on each layer. For a two layer system that is sixteen data points in total. Positioning of the points is also key and is subjective to the operator. Proper training does result in good correlation between operators but there is always a subjectivity to the placement of the layers. Version 8 eliminates the need for the operator to interpret the layers. Using advanced algorithms and image processing the operator selects the product from a drop down menu captures the image and clicks on the process button. The software analyses the image and will place the markers; up to 360 data points per layer can be selected for the ultimate in accuracy, with results being delivered in less than 2 seconds.

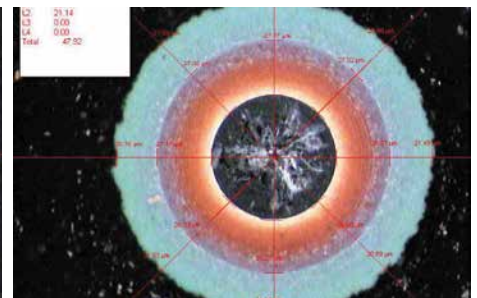
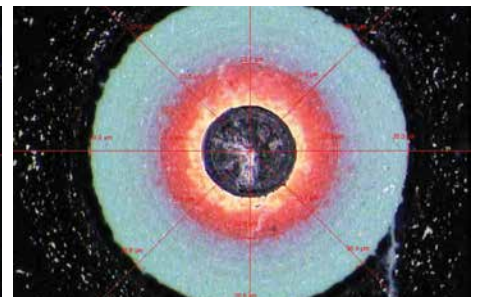
### ALUMINIUM SUBSTRATE



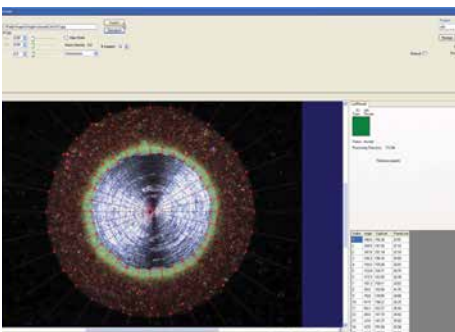
### GALVANIZED SUBSTRATE



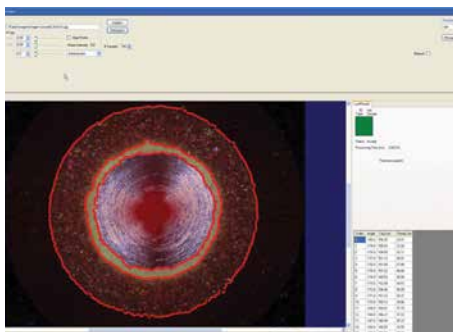
### GLASS SUBSTRATE



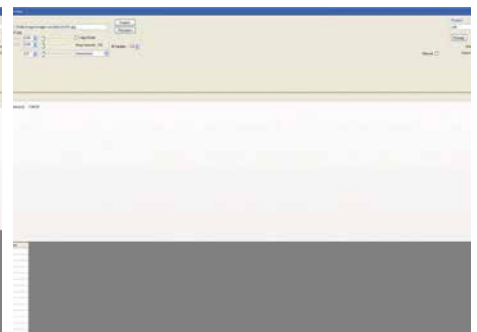
### 32 DATA POINTS



### 360 DATA POINTS



### RESULTS - TOTAL DFT



For more information visit our website  
or contact our Sales Team:



[www.djh.com](http://www.djh.com)



(905) 825-2750



[sales@djh.com](mailto:sales@djh.com)

**DJH**  
DESIGNS INC.

# MEK RUB TEST MACHINE

ASTM  
D7835

The MEK Rub Test machine has been developed to combat the problem of inconsistent test results between operators. This semi automated machine gives the line operator and quality control personnel the ability to duplicate results from the laboratory to the production line every time. The front panel mounted controls make it simple for the user to program the required number strokes to run for a specified test, then simply lower the head, close the cover, and press the start button, the machine will do the rest. This frees the operator to perform other QC test while the machine performs the rub test consistently and reliably with the added benefit of greatly reducing operator contact with and exposure to the solvents being used for the rub test procedure. Once the cycle counter reaches the preset number of strokes the unit will shut off the solvent flow and return to the start position ending the test. The operator can return at any time to check the results of the Rub Test. The quick change solvent pad system means that preparing for the next test procedure is quick and efficient.

## FEATURES AND BENEFITS

- ✓ Easy to setup, simple to operate
- ✓ Repeatable consistent results, constant pressure dead weight rubbing block
- ✓ Front panel mounted controls
- ✓ Minimal solvent usage, adjustable solvent flow metering valve
- ✓ 425cc solvent reservoir with auto shutoff control
- ✓ Quick Change solvent pad system
- ✓ Controlled Stroke count, counter can be set from 1 to 9999 strokes
- ✓ CE Certified
- ✓ Intrinsically safe - no electrics, all pneumatic operation.
- ✓ Minimized operator contact with and exposure to Solvent



## SPECIFICATIONS

WEIGHT OF MACHINE	28.3 kg (62.5 lbs)
MEK RESERVOIR CAPACITY	425 cc.
MASS OF RUBBING BLOCK	ASTM Standard 3kg (6.8 lbs) / EU Standards 1000g
STROKE LENGTH	203mm (8")
NUMBER OF STROKES/MIN (DOUBLE RUB)	70
OPERATIONAL AIR PRESSURE	550 KPa (80 psi)
MAX AIR SUPPLY PRESSURE	965 KPa (140 psi)
AIR CONSUMPTION @ OPERATIONAL PRESSURE	2.35 SCFM @ 550 KPa (80 psi)
MINIMUM FLEXIBLE AIR LINE SUPPLY SIZE	¼" I.D.
AIR INLET CONNECTION AT FILTER	¼ NPT
COTTON PAD SIZE	1½ x 1¾, 2 ply
COUNTER MIN/MAX NUMBER OF STROKES	1-9999
AIR SUPPLY	550 kpa (80 psi) Clean and dry (non condensing)
DIMENSIONS (WIDTH DEPTH HEIGHT)	457x483x483mm (18"x19"x19")
TEST PANEL SIZE	127mm x 305mm (5" x 12")
ELECTRICAL REQUIREMENTS	None (all pneumatic system)
PANEL THICKNESS MAX**	3.2 mm (1/8") **thicker panels can be run with a simple adjustment.

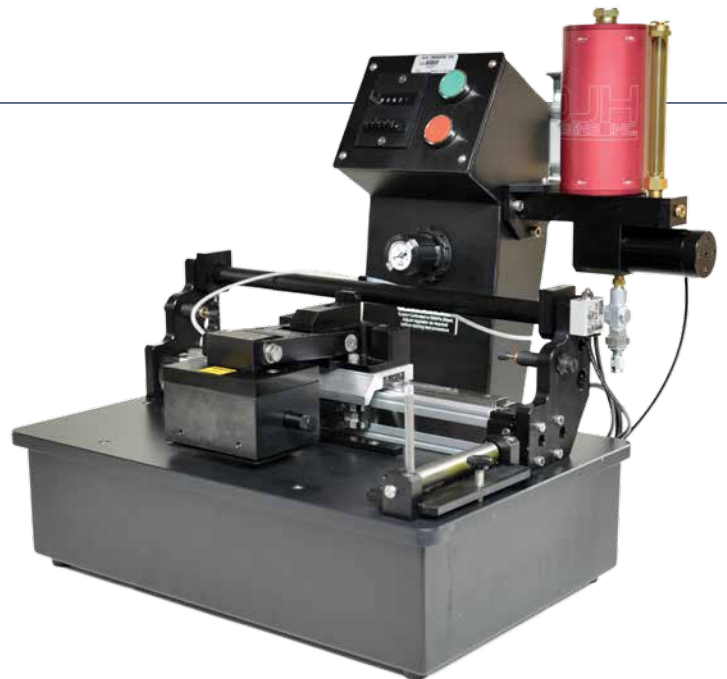
## OPTIONAL ACCESSORIES

### Variable Stroke Kit

This add on kit allows for the use of non standard size panels. Panels ranging in length from 85mm (3.5") to 305mm (12")

### Variable Weight Head

The variable weight head allows you to change the mass of the head from 1000g to 3000g in 50g increments, thus allowing for testing to either the ASTM or EU standards without having to change the head block.



**For more information visit our website  
or contact our Sales Team:**



[www.djh.com](http://www.djh.com)



(905) 825-2750



[sales@djh.com](mailto:sales@djh.com)

**DJH**  
DESIGNS INC.

# STRIP-LOK™

## SHEET METAL JOINER

**A STRIP TEAR ON A COIL PROCESSING LINE DOESN'T JUST COST THE COMPANY TIME AND MONEY. IT'S A MAJOR HEADACHE FOR THE PRODUCTION CREW WHOSE JOB IT IS TO REPAIR THE DAMAGE.**

**NOW THERE'S A SOLUTION - THE STRIP-LOK™ JOINER**

### General Description

The **STRIP-LOK™** Sheet Metal Joiner is a portable strip-joining machine driven by compressed air. The main use for **STRIP-LOK™** joiners is repairing strip tear off situations on modern steel strip processing lines such as continuous galvanizing and paint coil coating lines. Four models are available to suit most production facilities. This is the best advance in economical efficient and effective strip joining equipment in over three decades. Already used by major US, Canadian and Australian steel manufactures, the **STRIP-LOK™** Sheet Metal Joiner is highly appreciated and valued.

Repeatable, strong connections can be achieved with a total sheet thickness up to 1.8mm (0.07").

Operation is very clean and quiet as the **STRIP-LOK™** Joiner does not require any consumables other than the two pieces of strip to be joined and no blank is produced.

### Joint Strength

The strength of each joint depends upon the gauge and properties of the metal being connected. As a general rule, 20 punches on each side of .4mm soft iron sheets provide a tensile force of approximately 25kN (5620 lb).

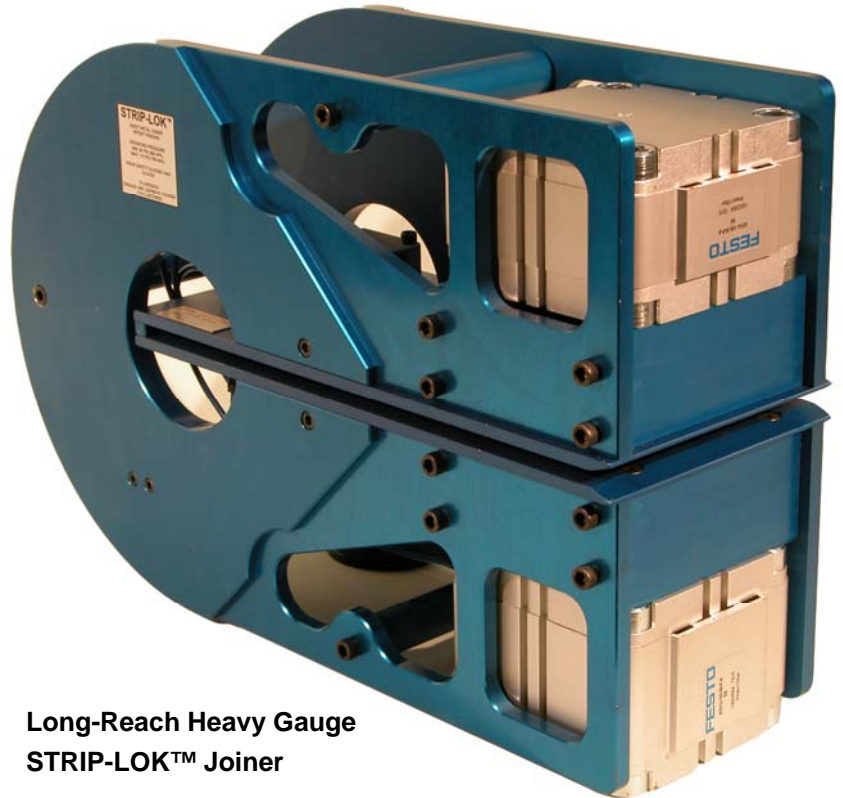
If joining two sheets of different thicknesses, always place the thicker material on the underside.

Note: A light application of lubricant on the sheets being joined or on the punch will facilitate operation when joining thick sheets near the joiners upper capacity.

### Principles of Operation

The joint is achieved by mechanically punching a square hole through the sheets to be joined and folding the flared strip back onto itself.

Apart from requiring an external compressed air source the **STRIP-LOK™** Joiner is fully self contained. The **STRIP-LOK™** Joiner is activated as soon as the trigger is pressed and an automatic cycle of punching and flattening the two layers of metal strip will then commence. The joining cycle will immediately stop as soon as the trigger is released.



**Long-Reach Heavy Gauge  
STRIP-LOK™ Joiner**

### Warranty Information

**STRIP-LOK™** Sheet Metal Joiners are manufactured using only the highest quality materials and workmanship. The light weight housing is manufactured using a high strength grade aluminum alloy and the punch and die are manufactured using high strength tool steel which is hardened and heat treated prior to assembly. The joiners are fully bench tested in the factory prior to shipping.

A six months warranty from the date of purchase to the original owner is provided covering workmanship and materials of construction. The warranty does not cover miss-use. The supplier or manufacturer may decide at their discretion to repair or replace faulty equipment. A charge will be applied covering repairs to equipment damaged through miss-use, including damage resulting from the use of contaminated compressed air.

**A SIMPLE, FAST AND EFFECTIVE SOLUTION  
TO STRIP TEAR-OFFS ON COIL PROCESSING LINES**



2366 Wyecroft Road, Unit D4  
Oakville, Ontario, Canada, L6L 6M1  
Ph: 905.825.2750 Fax: 905.825.3628  
www.djh.com email: sales@djh.com

### General Purpose STRIP-LOK™ Joiner



This unit is used for most common joining operations. It is characterized by its light weight at only 11.8 kg and by its compact size. It is the most economical unit and is capable of dealing with most strip tear-off situations. Although it is limited to a maximum strip thickness of 0.7 mm thick soft iron, this is sufficient to deal with the majority of strip tear-off situations.

### Heavy Gauge STRIP-LOK™ Joiner



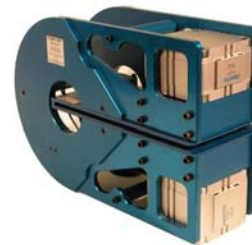
This unit is capable of joining two layers of 0.9 mm thick soft iron. Strip tear-off at heavier gauges becomes relatively un-common. This unit is as compact as the General purpose STRIP-LOK™ Joiner.

### Long-Reach STRIP-LOK™ Joiner



Designed for wide strip, the long reach unit has a reach of 300mm from the strip edge. It is not necessary to have individual joints across the entire width of the strip. Considerable stability is created in a joint of two overlapping sheets via a reasonable overlap region in the order of 700mm or more. This unit can be used to join strip widths up to 1500mm.

### Long-Reach Heavy Gauge STRIP-LOK™ Joiner



This unit has the same heavy duty capabilities of the HG unit combined with the extended reach of the LR model capable of joining two layers of 0.9 mm (.035") thick soft iron. This unit has a reach of 300mm (11.8") This unit can be used to join strip widths up to 1500mm. The STRIP-LOK™ Sheet Metal Joiner is a portable strip-joining machine driven by compressed air. The main use for STRIP-LOK™ joiners is repairing strip tear off situations on modern steel strip processing lines such as continuous galvanizing and paint coil coating lines. This is the best advance in economical efficient and effective strip joining equipment in over three decades.

## Strip Thickness, Capabilities & Specifications

### Air Supply

Air supply pressure should be between 600kPa and 760kPa (85 – 110 PSI), filtered, dry and lubricated. A supply pressure of 700kPa (100 PSI) is recommended to obtain the capacities as listed below.

### Metal Limits

As the supply air pressure increases, so too does the capacity of the STRIP-LOK™ Joiner to join thicker sheets. As a general rule the following specifications apply for the four models:

	Light Gauge General Purpose	Heavy Gauge	Long-Reach	Long-Reach Heavy Gauge
<b>Air Pressure, kPa (PSI)</b>	600 – 760 (85-110)	600 - 760 (85-110)	600 – 760 (85-110)	600 – 760 (85-110)
<b>Weight, kg (lb.)</b>	11.8 (26)	14.8 (32.6)	14.5 (32)	14.5 (32)
<b>Dimensions, mm (in)</b>				
<b>L</b>	333 (13.1)	345 (13.58)	476 (18.74)	476 (18.74)
<b>W</b>	155 (6.1)	175 (6.88)	155 (6.10)	175 (6.88)
<b>H</b>	368 (14.48)	368 (14.48)	320 (12.59)	320 (12.59)
<b>Throat Depth, mm (in)</b>	185 (7.28)	185 (7.28)	300 (11.8)	300 (11.8)
<b>Throat Opening, mm (in)</b>	8 (.315)	8 (.315)	8 (.315)	8 (.315)
<b>Maximum Strip Thickness mm (in) @ 700kPa (100 PSI)</b>	Soft Iron 2 @ .7mm (.028) Hard Iron 2 @ .5mm (.020)	Soft Iron 2 @ .9mm (.035) Hard Iron 2 @ .6mm (.024)	Soft Iron 2 @ .7mm (.028) Hard Iron 2 @ .5mm (.020)	Soft Iron 2 @ .9mm (.035) Hard Iron 2 @ .7mm (.028)